



## **Vivotek** **IP Surveillance System**

# **Video Server VS2101**

VS2101 is an ideal and compact solution delivering high quality compressed video at real-time frame rate. The industrial-standard design well suits for video monitoring and surveillance over LAN or WAN. With flexible peripheral support, users can remotely monitor and control the security application by means of standard web browsers.

It is the smart choice to drop the messy combo of PC, complicated software and low-quality capture card. Vivotek's IP surveillance technology offers more future-proof and cost-effective solutions to help you migrating from analog to digital in a smooth way.

## **Features**

- Easy web access via popular browsers
- Familiar wizard assistance
- Real-time performance with options of size and quality
- Built-in motion detection
- WAN support via external modem
- Multiple PTZ camera support with flexible interface
- Extension for sensor and alarm
- Development kit for system integrators

# Technical Specifications

## VS2101



### System

- CPU: Trimedia PN1300
- RAM: 16MB SDRAM
- ROM: 2MB FLASH ROM

### Networking

- Protocol  
TCP/IP, HTTP, SMTP, FTP, Telnet, NTP, DNS and DHCP
- Modem  
PPP(dial-up, direct cable connection)
- Ethernet  
10 baseT or 100 baseT Fast Ethernet auto negotiation

### Video

- Algorithm supported  
MJPEG
- Video I/O  
1 analog video input
- Features  
Adjustable image size and quality  
B/W or color control  
Time stamp and text overlay
- Resolution  
**NTSC**  
Up to 30 frames at 176x112  
Up to 30 frames at 352x240  
Up to 9 frames at 704x480  
**PAL**  
Up to 25 frames at 176x144  
Up to 25 frames at 352x288  
Up to 8 frames at 704x576

### Serial Port

- 9 pin D-SUB RS232 or RS485  
(PTZ camera control or modem)  
max.115.2kbps

### General I/O

- 1 sensor input max. 12VDC 50mA
- 1 relay output max. 24VDC 1A / 125VAC 0.5A

### LED Indicators

- Network indicator
- Heartbeat indicator
- Status indicator

### Dimension

- Length: 122.9mm
- Width: 72.3mm
- Height: 50mm

### Weight

- NET .340g

### Power

- Consumption: near 4.2W
- Input: 100-240VAC, 50/60Hz, 0.4A
- Output: 12VDC, 1.5A

### Operating Environment

- Temperature: 0~65°C(32~149°F)
- Humidity: 95% RH

### EMI & Safety

- CE, FCC, BSMI

### Security

- Administrator and user group protected
- Password authentication
- Demo account with limitation by administrator

### Pan/Title/Zoom

- Multiple PTZ camera control through RS232 or RS485
- Currently supported devices and protocols  
Sony VISCA, Canon VC-C1, VC-C3, VC-C4  
DynaColor DynaDome, Pelco D, LiLin, Ermitec
- CGI command serial driver is supported

### Alarm Features

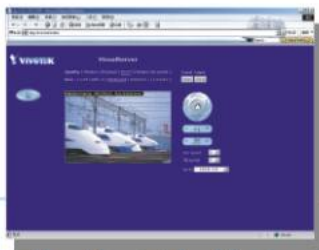
- Motion detection with percentage and sensitivity
- Weekly repeat timing schedule
- 3 color images per camera for pre/post alarm
- Automatic transfer of stored images via email or FTP

### Development Kit

- Open ActiveX control

### Viewing System Requirement

- Internet Explorer 4.x or above;
- Netscape Navigator 4.x or above



All specifications are subject to change without notice.  
All other trademarks are owned by their respective companies.