

*Pan/Tilt*  
*Network Camera*  
**MPEG4**



*Complete Solution for Internet Video Transmission  
and Recording*

# Vivotek IP Surveillance System

## ► Fast Pan/Tilt

- High-speed pan & tilt for the highly responsive viewing freedom.
- **Auto pan mode:** Move the CCD head in horizontal direction one time to scan the whole range; The pan speed can be adjusted.
- **Auto Patrol mode:** Move the CCD head among up to 10 preset positions.



· Pan:270°

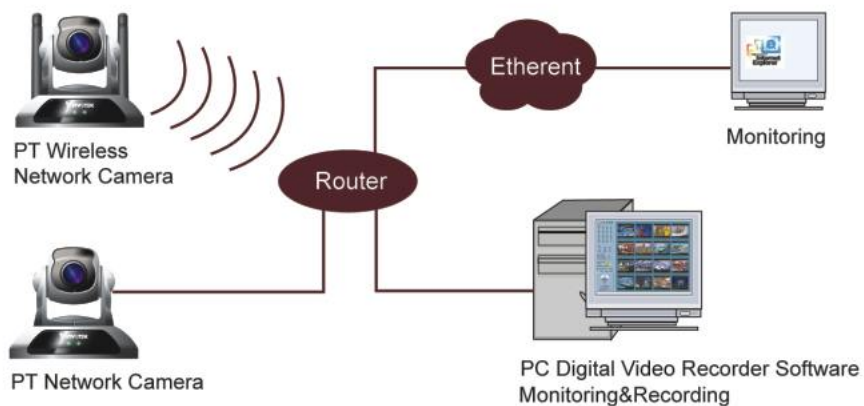
· Tilt:135°

## ► Synchronizing Video & Audio Transmission

Vivotek MPEG4 video and audio compression engine technology ensures the lowest bandwidth requirement without sacrificing quality.

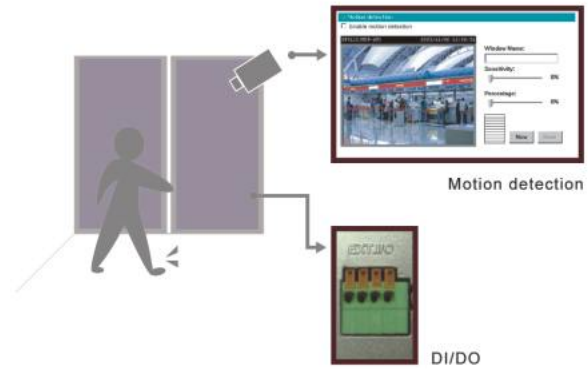
## ► Direct Ethernet/Wireless Network Connectivity

Simplicity and flexibility is achieved through easy connection to Ethernet hub/router or WLAN access point.



## ▶ Alarm I/O & Motion Detection

Besides intelligent motion detection, Pan/Tilt Network Camera provides a general I/O terminal block including one alarm trigger input and one relay switch for device control. Using the motion detection or signal output from the alarm trigger connector, you can upload snapshots to trace the happened events.



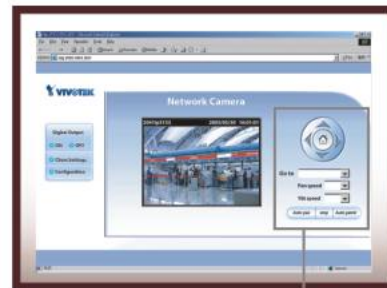
● Example of system installation with alarm function

## ▶ Built-in Web Server

The Pan/Tilt Network Camera provides convenient access to visual contact via popular web browsers; the integrated pan/tilt function can also be controlled remotely from viewer's browser.

Three different user levels are determined by authentication of ID/password assigned to individual users:

- (1) Only video/audio access
- (2) Plus operation of pan/tilt control and DI/DO control
- (3) Plus system configuration.



● PT Camera Control

## ▶ Free Bundled 4 Channels Monitoring & Recording Software

ST3201 is a professional surveillance software supporting Vivotek 3000 series Video Server and Network Cameras. It provides simultaneous monitoring and image recording for four units as well as fast search and playback.



Monitoring & Recording



Playback

|  |   |  |   |
|--|---|--|---|
| <p><b>Remote Management Networking</b></p>                   | <ul style="list-style-type: none"> <li>Configuration and system log can be accessed via web browser and FTP application remotely</li> </ul> <p><b>Protocol</b></p> <ul style="list-style-type: none"> <li>UPnP, TCP/IP, HTTP, SMTP, FTP, Telnet, NTP, DNS and DHCP</li> </ul> <p><b>Ethernet</b></p> <ul style="list-style-type: none"> <li>10BaseT or 100BaseT Fast Ethernet</li> <li>22Mbps 802.11b+ wireless LAN (PT3113/3123 only)</li> </ul>   | <p><b>Security</b></p> <ul style="list-style-type: none"> <li>Three levels of user privilege</li> <li>ID/Password authentication</li> </ul> <p><b>Camera Specifications</b></p> <ul style="list-style-type: none"> <li>1/4" color CCD image sensor</li> <li>512(H) x 492(V)(NTSC)/512(H)x582(V)(PAL)</li> <li>1 Lux/F2.0</li> <li>AGC/AWB</li> <li>Electronic Shutter: 1/60 (1/50) to 1/100,000 sec.</li> <li>Lens: 6.0mm, F1.8</li> </ul>                                   | <ul style="list-style-type: none"> <li>System power and microphone indicator</li> <li>System activity and network link indicator</li> </ul> |
| <p><b>Video</b></p>  | <p><b>Algorithm supported</b></p> <ul style="list-style-type: none"> <li>MPEG4 (short header mode) for streaming video</li> <li>JPEG for still image</li> </ul> <p><b>Features</b></p> <ul style="list-style-type: none"> <li>Adjustable image size, quality and bit-rate</li> <li>Time stamp and text caption</li> <li>Three configurable motion detection windows</li> <li>Flip &amp; mirror</li> <li>Video output connector</li> </ul>   | <p><b>LED Indicators</b></p> <ul style="list-style-type: none"> <li>System power and microphone indicator</li> <li>System activity and network link indicator</li> </ul> <p><b>Sensor and relay</b></p> <ul style="list-style-type: none"> <li>1 opto-isolated sensor input</li> <li>1 alarm relay output</li> </ul> <p><b>Dimension</b></p> <ul style="list-style-type: none"> <li>Length: 105mm</li> <li>Width: 105mm</li> <li>Height: 110mm</li> <li>Net: 350g</li> </ul> | <p><b>Power</b></p> <ul style="list-style-type: none"> <li>12V DC, 1.5A external universal power supply</li> </ul>                          |
| <p><b>Video Resolution</b></p>                               | <p><b>NTSC(PT3112/PT3113)</b></p> <ul style="list-style-type: none"> <li>Up to 30 frames at 176x120</li> <li>Up to 30 frames at 352x240</li> </ul> <p><b>PAL(PT3122/PT3123)</b></p> <ul style="list-style-type: none"> <li>Up to 25 frames at 176x144</li> <li>Up to 25 frames at 352x288</li> </ul> <p>Internet Explorer 5.x or above</p>  | <p><b>Weight</b></p> <ul style="list-style-type: none"> <li>Net: 350g</li> </ul> <p><b>Power</b></p> <ul style="list-style-type: none"> <li>12V DC, 1.5A external universal power supply</li> </ul>  | <p><b>Development Kit</b></p> <ul style="list-style-type: none"> <li>Open ActiveX control</li> </ul>  |
| <p><b>Viewing System Requirement</b></p> <p><b>Audio</b></p> | <p><b>Algorithm</b></p> <ul style="list-style-type: none"> <li>24kbps</li> </ul> <p><b>Features</b></p> <ul style="list-style-type: none"> <li>Built in microphone</li> <li>External microphone connector</li> <li>Audio output connector</li> </ul>  | <p><b>EMI &amp; Safety</b></p> <ul style="list-style-type: none"> <li>CE, FCC</li> </ul>   |   |
| <p><b>Pan/Tilt</b></p>                                       | <p><b>Algorithm</b></p> <ul style="list-style-type: none"> <li>24kbps</li> </ul> <p><b>Features</b></p> <ul style="list-style-type: none"> <li>Built in microphone</li> <li>External microphone connector</li> <li>Audio output connector</li> <li>Pan: range <math>\pm 135^{\circ}</math>; <math>15^{\circ} \sim 50^{\circ}</math> /sec</li> <li>Tilt: range <math>+90^{\circ} \sim -45^{\circ}</math>; <math>15^{\circ} \sim 25^{\circ}</math> /sec</li> <li>Auto pan mode</li> <li>Auto patrol mode</li> </ul> |  |   |



**Pan Tilt Wireless Network Camera**

PT3113:NTSC

PT3123:PAL

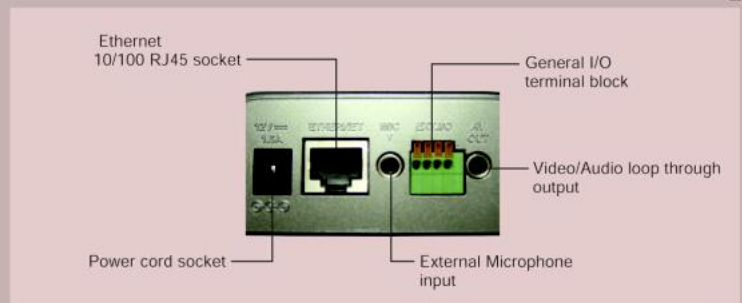


**Pan Tilt Network Camera**

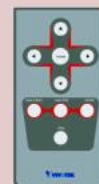
PT3112:NTSC

PT3122:PAL

**Rear View**



**Optional Accessories**



**IR Remote controller**

\*\* All specifications are subject to change without notice.

All other trademarks are registered of their respective companies