



## **Vivotek** **IP Surveillance System**

# **Network Camera** **IP3113/3123/3133**

IP3113/3123/3133 are versatile wireless network cameras powered by Vivotek optimal audio and video synchronizing technology. A built-in web server provides easy user interface for remote access to view and configure from anywhere in the world over the Internet with popular Microsoft Internet Explorer. Users just access streaming video/audio from the network camera like browsing any regular web site. More than high-performance network cameras, IP3113/3123/3133 also possess many advanced features to provide the ideal personal or SOHO solution for web attraction, remote surveillance, home security, video conference, etc....

### **Features**

- Support 802.11b+ 22Mbps wireless LAN and 10/100Mbps Ethernet
- Built-in camera and high-sensitivity microphone
- High performance and fully configurable MPEG4 compression
- Optimal synchronization of audio and video
- Built-in web server for global access
- Motion detection with three sensitive windows
- Weekly schedule for applications
- Pre/Post alarm snapshots
- Remote control for sensor and alarm
- Customizable homepage



• IP3113 NTSC CCD  
• IP3123 PAL CCD



• IP3133 CMOS

# Technical Specifications

## IP3113/3123/3133

### Model

- IP3113 NTSC CCD
- IP3123 PAL CCD
- IP3133 CMOS

### System

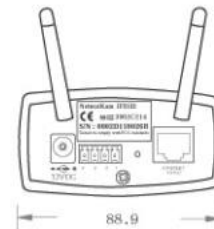
- CPU: Trimedia PNX1300
- RAM: 8MB SDRAM
- ROM: 2MB FLASH ROM

### Networking

- Protocol  
TCP/IP, HTTP, SMTP, FTP, Telnet, NTP, DNS and DHCP
- Ethernet  
10 baseT or 100 baseT Fast Ethernet auto negotiation
- WLAN
  - Protocol  
2.4GHz 802.11b+ DSSS CSMA/CA
  - Bit rate  
22/11/5.5/2/1 Mbps
  - Coverage  
100M/22Mbps, 150M/11Mbps, 250M/5.5Mbps,  
300M/2Mbps, 350M/1Mbps

### Video

- Algorithm supported  
MPEG4(short header mode)
- Features  
Adjustable image size, quality and bit-rate  
Time stamp and text overlay  
3 motion detection windows
- Resolution
  - IP3113(NTSC)**  
Up to 30 frames at 176x120  
Up to 30 frames at 352x240
  - IP3123(PAL)**  
Up to 25 frames at 176x144  
Up to 25 frames at 352x288
  - IP3133**  
Up to 30/25 frames at 160x120  
Up to 30/25 frames at 320x240



### Camera Specification

- IP3113/3123  
1/4 inch color CCD image sensor  
512(H)x492(V)(IP3113)/512(H)x582(V)(IP3123)  
1 Lux / F2.0  
AGC, AWB, AES  
Electronic shutter: 1/60(1/50)~1/100,000sec.
- IP3133  
1/3 inch color CMOS sensor  
640x480  
2.5Lux / F1.4  
AGC, AWB  
Electronic shutter: 1/60~1/15,000sec.

### Lens

- Standard CS-mount type, 6.0mm, F1.8

### Audio

- 24kbps and 8kbps (optional)

### Microphone

- Omni-directional
- Frequency  
50 ~ 16000Hz
- S/N ratio  
More than 60dB

### General I/O

- 1 sensor input max. 12VDC 50mA
- 1 relay output max. 24VDC 1A / 125VAC 0.5A

### LED Indicator

- Dual color system status indicator

### Dimension

- Length: 143.5mm
- Width: 88.9mm
- Height: 57.2mm

### Weight

- NET. 315g

### Power

- Consumption:  
IP3113/3123: near 7W  
IP3133: near 8.4W
- Input: 100-240VAC, 50/60Hz, 0.4A
- Output: 12VDC, 1.5A

### Operating Environment

- Temperature: 0~50°C(32~122°F)
- Humidity: 95% RH

### EMI & Safety

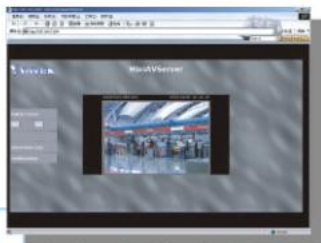
- CE, FCC, BSMI

### Viewing System Requirement

- Operation system: Microsoft Windows98 SE, ME, NT4.0, 2000, XP
- Browser: Internet Explorer 5.0 or above

### Free Bundled ST3201 Software

- Remote configuration and control for four devices
- Event-triggered, scheduled, manual recording
- Instant search with preview windows
- Fast/slow forward replay and pause
- Hard disk quota warning
- Scheduled backup
- AVI format export
- \* 16-channel commercial version is available



All specifications are subject to change without notice.  
All other trademarks are owned by their respective companies.